



Leading Wood Processing to New Heights, Custom Solutions for Any Wood Challenge.



# 600 - INDUSTRIAL WOOD CHIPPER



Built for urban greenery maintenance and large-scale forestry projects, this 150mm capacity wood chipper combines rugged mobility with intelligent operation via a hydraulic-diameter auto-feed system. Users benefit from 360° discharge chute control, real-time engine load alerts, and optional Cummins/Perkins engines for global part availability.



# CORE PARAMETERS

## TIROX 600

### Core Power

Engine Power	35 HP (Diesel)
Engine Starting Method	Electric start
Number of Engine Cylinders	1 cylinders
Starting Method	Electric start (24V)
Fuel Tank Capacity	Approximately 80 - 100L

### Processing Capacity

Maximum Processing Diameter	5 inches (120mm)
Production Capacity (Approx.)	0.8 - 1 ton/hour
Feed Inlet Size (Approx.)	300 x 180mm

### Cutting System

Cutting Structure	Drum - type
Drum/Disc Diameter	300mm
Cutting Blades	4 moving blades + 1 fixed blade
Drum Rotation Speed	2200 rpm

### Feeding System

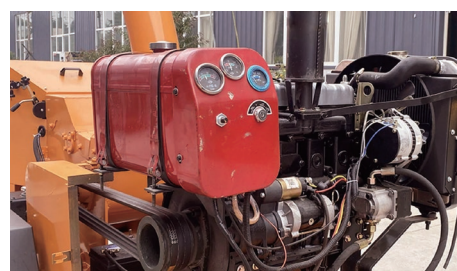
Feeding Method	Hydraulic forced feeding (horizontal roller)
Intelligent Feeding Control (Anti - Blocking)	Smart Feed System

### Convenience and Features

Hydraulic Oil Tank	25L
Taillight/Night Light	Yes
Chassis (Standard)	4 - wheel towed (tandem axle)
Optional Configurations	Crawler - type
Optional Configurations	Road worthy configuration
Optional Configurations	Feeding conveyor belt



Hydraulic Forced Feeding System



Top-Tier Diesel Engine



Smart Control Panel



Intelligent Feeding System



**TIROX 600**

Max. input dia.: 5 inches (120mm)  
Engine: 35 HP (Diesel)  
Capacity: 0.8 - 1 ton/hour



**TIROX 1063**

Max. input dia.: 12 inches (300mm)  
Engine: Weichai 129 HP Diesel  
Capacity: 5 - 6 ton/hour



**TIROX 1585**

Max. input dia.: 16 inches (430mm)  
Engine: Weichai 244 HP Diesel (Cummins optional)  
Capacity: 7 - 10 ton/hour



**Horizontal Grinder**

Max. input dia.: Than 25 inches ( 1400 mm × 1000 mm)  
Engine: Cummins optional 550 HP  
Capacity: 10-50 ton/hour