



Leading Wood Processing to New Heights, Custom Solutions for Any Wood Challenge.



1585 - INDUSTRIAL WOOD CHIPPER



The 1585 wood chipper is easy to move and has a larger chipping capacity. Equipped with an intelligent feeding system, the wood chipper can easily process wood thicknesses less than 45cm. The discharge height and direction are adjustable. The final chip size is 2 cm to 5 cm. The chips can be used as fuel, organic fertilizer and mulch.





Leading Wood Processing to New Heights, Custom Solutions for Any Wood Challenge.



CORE PARAMETERS

TIROX 1585

Core Power

Engine Brand / Power	Weichai 244 HP Diesel, Cummins optional
Engine Model (for reference)	WP6D180E201
Number of Engine Cylinders	6 cylinders
Starting Method	Electric start (24V)
Fuel Tank Capacity	145L

Processing Capacity

Maximum Processing Diameter	16 inches (430mm)
Production Capacity (Approx.)	7 - 10 tons/hour
Feed Inlet Size (Approx.)	750 x 430mm

Cutting System

Cutting Structure	Drum - type
Drum Size (Approx.)	Φ850mm x 700mm
Cutting Blades	9 moving blades + 1 fixed blade
Drum Rotation Speed	2200 rpm

Feeding System

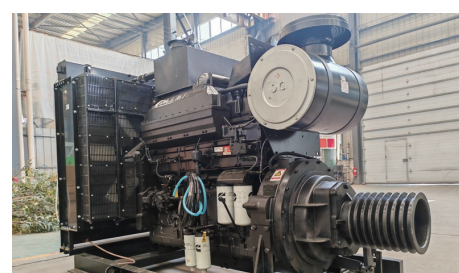
Feeding Method	Horizontal hydraulic forced feeding + feeding conveyor belt
Intelligent Feeding Control (Anti - Blocking)	(Smart Feeding System)

Convenience and Features

Hydraulic Oil Tank	250L
Discharge Pipe Rotation	360 degrees
Chassis (Standard)	4 - wheel towed (tandem axle)
Optional Configurations	Crawler - type
Optional Configurations	Road worthy configuration
Optional Configurations	Feeding conveyor belt



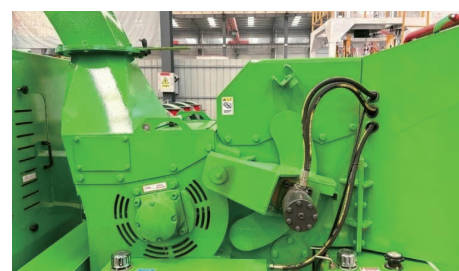
Hydraulic Forced Feeding System



Top-Tier Diesel Engine



Smart Control Panel



Intelligent Feeding System



TIROX 600

Max. input dia.: 5 inches (120mm)
Engine: 35 HP (Diesel)
Capacity: 0.8 – 1 ton/hour



TIROX 1063

Max. input dia.: 12 inches (300mm)
Engine: Weichai 129 HP Diesel
Capacity: 5 – 6 ton/hour



TIROX 1585

Max. input dia.: 16 inches (430mm)
Engine: Weichai 244 HP Diesel (Cummins optional)
Capacity: 7 – 10 ton/hour



Horizontal Grinder

Max. input dia.: Than 25 inches (1400 mm × 1000 mm)
Engine: Cummins optional 550 HP
Capacity: 10-50 ton/hour