



Leading Wood Processing to New Heights, Custom Solutions for Any Wood Challenge.



1063 - INDUSTRIAL WOOD CHIPPER



Engineered for high-volume municipal waste processing and plantation maintenance, this 129HP mobile unit combines Weichai/Cummins engine reliability with smart load-sensing technology. Its 470×430mm feed opening handles whole tree crowns while the ISO-17806-compliant cutting system delivers uniform chips for biomass fuel production. Customize with optional tracks for swamp forestry operations or steep terrain adaptation.





Leading Wood Processing to New Heights, Custom Solutions for Any Wood Challenge.



CORE PARAMETERS

TIROX 1063

Core Power

Engine Brand / Power	Weichai 129 HP Diesel
Engine Model (for reference)	WP4.1D95E201
Number of Engine Cylinders	4 cylinders
Starting Method	Electric start (24V)
Fuel Tank Capacity	Approximately 145L

Processing Capacity

Maximum Processing Diameter	12 inches (300mm)
Production Capacity (Approx.)	5 - 6 tons/hour
Feed Inlet Size (Approx.)	450 x 350mm

Cutting System

Cutting Structure	Drum - type
Drum Size (Approx.)	Φ630mm x 600mm
Cutting Blades	6 moving blades + 1 fixed blade
Drum Rotation Speed	2200 rpm

Feeding System

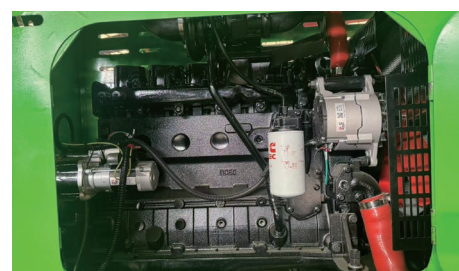
Feeding Method	Hydraulic forced feeding (horizontal roller)
Intelligent Feeding Control (Anti - Blocking)	(Smart Feeding System)

Convenience and Features

Hydraulic Oil Tank	176L
Discharge Pipe Rotation	360 degrees
Chassis (Standard)	4 - wheel towed (tandem axle)
Optional Configurations	Crawler - type
Optional Configurations	Road worthy configuration
Optional Configurations	Feeding conveyor belt



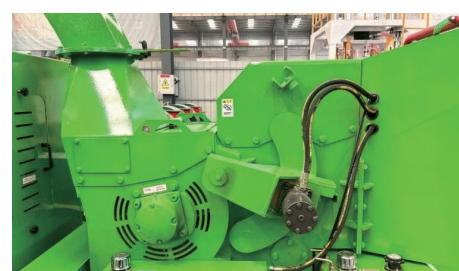
Hydraulic Forced Feeding System



Top-Tier Diesel Engine



Smart Control Panel



Intelligent Feeding System



TIROX 600

Max. input dia.: 5 inches (120mm)
Engine: 35 HP (Diesel)
Capacity: 0.8 – 1 ton/hour



TIROX 1063

Max. input dia.: 12 inches (300mm)
Engine: Weichai 129 HP Diesel
Capacity: 5 – 6 ton/hour



TIROX 1585

Max. input dia.: 16 inches (430mm)
Engine: Weichai 244 HP Diesel (Cummins optional)
Capacity: 7 – 10ton/hour



Horizontal Grinder

Max. input dia.: Than 25 inches (1400 mm × 1000 mm)
Engine: Cummins optional 550 HP
Capacity: 10-50 ton/hour